



CMA Engineering & Construction

PRIVATE LIMITED

55 Years of Experience



Providing **Construction & Engineering** services in Power sector, Buildings and Highways.

COMPANY PROFILE

A Brief Introduction



www.cma.com.pk



BASIC INFO

Company: CMA Engineering & Construction (Pvt) Ltd.

NTN No: 4917848-1

Head Office: 65/2 FCC, Syed Maratib Ali Road,
Gulberg-IV, Lahore, Pakistan.

Landline: +92 42 35778186-87

Mobile: +92 300 7111173

Email: info@cma.com.pk

Website: www.cma.com.pk



ABOUT US

CMA was established in 1969 by *Ch. Maqsood Ahmad* as a construction company of buildings & Infrastructure works. **CMA** has been in the forefront of the engineering and construction world for last 55 years. CMA was sole proprietor firm until 2019 after that Ch. Maqsood Ahmad along with his son i.e. Fareed Maqsood expanded their business and converted Sole Proprietor firm to Private Limited firm having name as "**CMA Engineering & Construction (Pvt) Ltd**".

CMA has been actively involved in the projects of Educational Buildings (Schools, Colleges & Universities), Religious Buildings (Mosques & Shrines), Monuments, Real Estate (Housing Schemes), Roads, Transmission Lines, Substations & Overhead reservoirs.

CMA have completed dozens of contracts with various multinational and local companies and individuals. We always believe in Quality of work instead of Quantity. We are experienced in providing quality services. By the grace of ALLAH ALMIGHTY, **CMA** has no major accidental record in whole life of the company.



OUR VISION

Our Vision is to consistently exceed client expectations by delivering projects that are not only structurally sound but also aesthetically pleasing and functional.

Our goal is to create enduring structures that positively impact communities and contribute to their growth and development. Through a collaborative approach, we strive to foster strong relationships with our clients, partners, and stakeholders, working together to bring visionary ideas to life. Our vision encompasses a dedication to professional integrity, ethical practices, and a strong sense of social responsibility. We aspire to leave a lasting legacy of outstanding craftsmanship, outstanding service, and a positive impact on the built environment.



A MESSAGE by the CEO

I humbly extend my greetings to you as the servant of Almighty Allah, entrusted with the position of CEO in our esteemed Construction Company.

At the core of our organization, we are deeply committed to excellence, integrity, and the pursuit of transformative construction projects that redefine industry standards. In our dynamic business landscape, adaptability is key. We have embraced change, turning challenges into opportunities for growth. Our team's collective strength propels us forward.

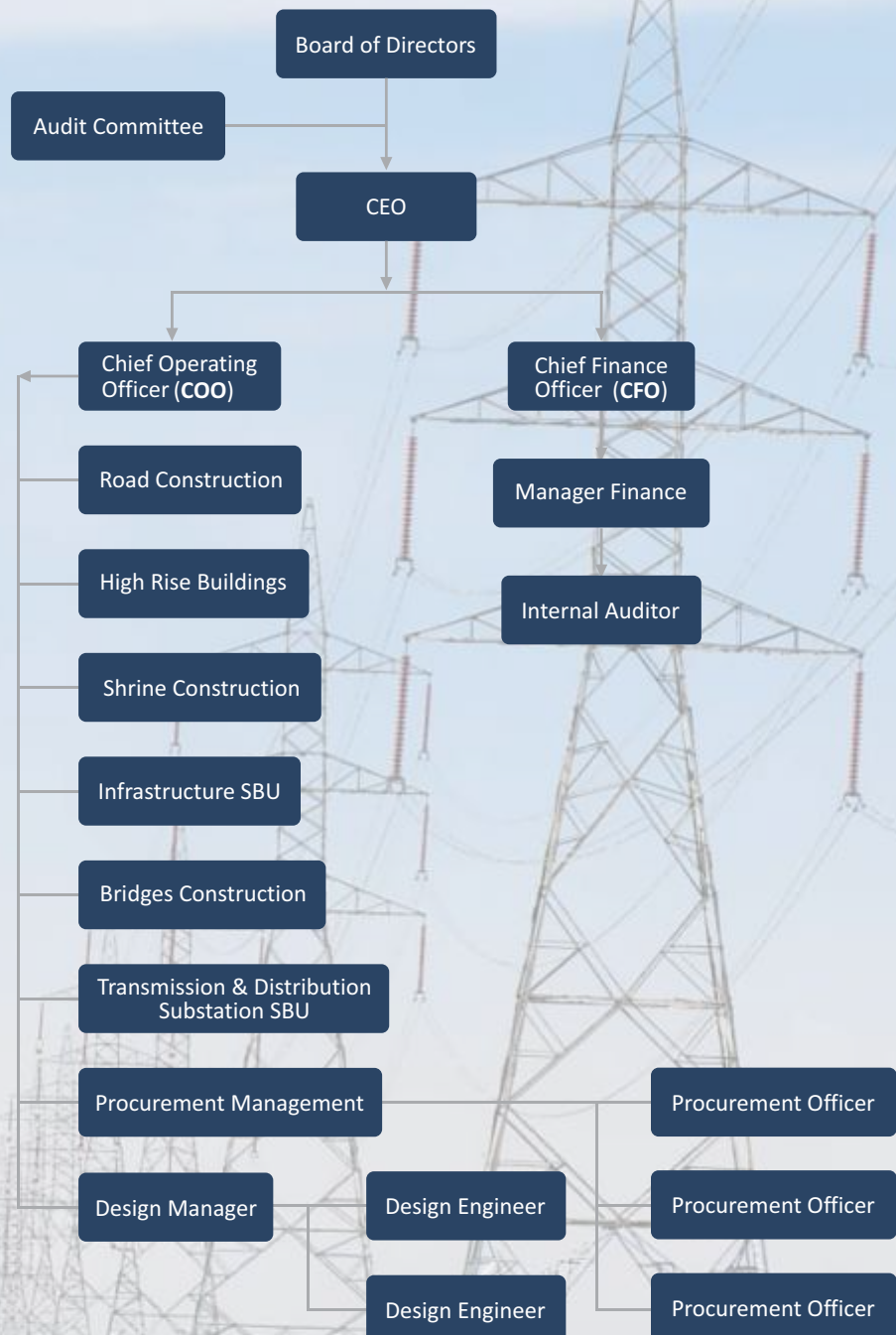
Let us move forward with a steadfast focus, supporting one another in our collective journey. The challenges we encounter are tests from Almighty, and with dedication and reliance on Him, we shall overcome them and emerge stronger. Together, let us continue to push the boundaries of construction innovation, upholding the values instilled by our faith.

In the name of Almighty Allah, the Best of Planners, I pray for the success and prosperity of our Construction Company and for the well-being of all those associated with it.

Engr. Fareed Maqsood

CEO | CMA Engineering & Construction (Pvt) Ltd.

ORGANIZATIONAL CHART (COMPANY)





ORGANIZATIONAL CHART

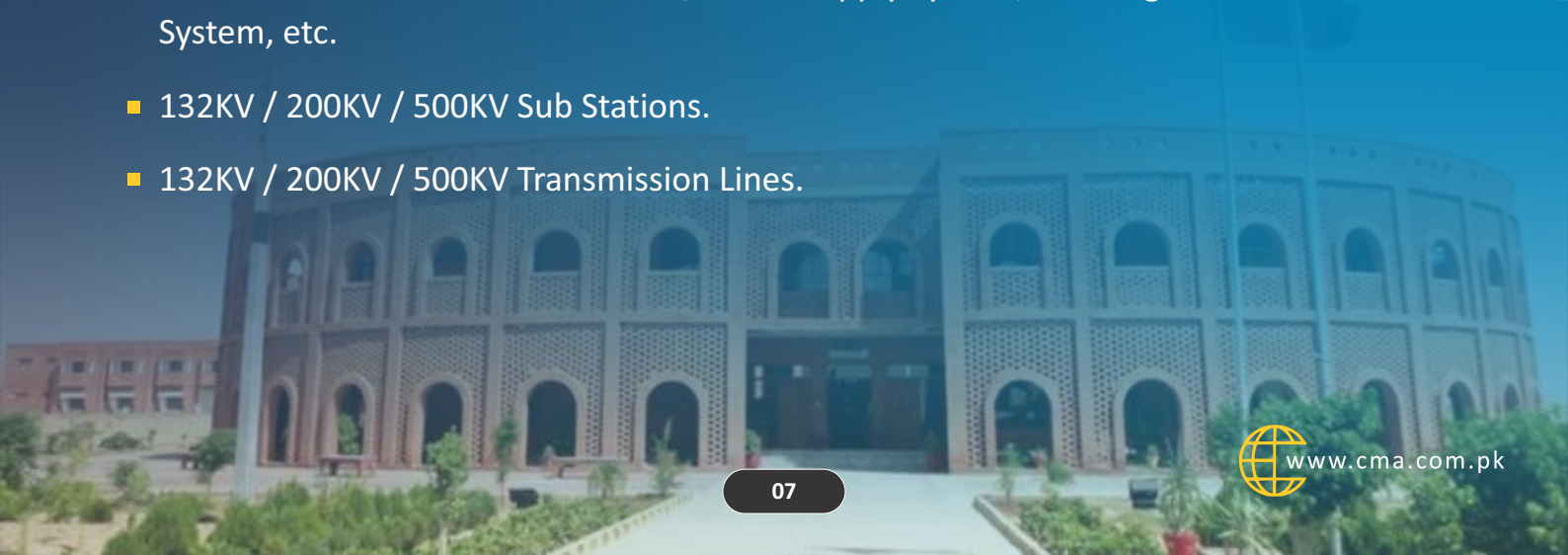
(SITE)



SERVICES

we offer construction services for:

- Buildings - such as, Universities, Colleges, Schools, Hospitals, Mosques, Shrines, Monuments, Housing Schemes, High Rise Buildings, Commercial Plaza, etc.
- Infrastructure work - such as Roads, Water Supply System, Sewerage System, etc.
- 132KV / 200KV / 500KV Sub Stations.
- 132KV / 200KV / 500KV Transmission Lines.



DEPARTMENTS

CMA is working in the following departments since 1969:

- Public Health Engineering.
- AUQAF and Religious affairs Department. Cantonment Board.
- Housing & Physical Department.
- University of Engineering & technology, Lahore Campus.
- University of Engineering & technology, Kala Shah Kaku Campus.
- University of Engineering & technology, Campus.
- National Transmission & Despatch company Ltd. (NTDC) 9- Multan Electric Power Company (MEPCO).
- Multan Electric Power Company (MEPCO)
- DISCOS
- Daanish Schools & Centers of Excellence Authority. 11- DHA
- Anjuman Himayet-i-Islam

CMA is specialized in Buildings, Roads, Mosques, Shrines, Hospitals, Housing Schemes, Overhead Reservoirs, Sewerage Systems, Sub-stations and Transmission Lines.



PROJECTS

Public Health Engineering Department

S. No.	Project Name	Cost (Million)	Year
1	Construction of 50,000 Gallon Over Head Reservoir at Muhallah Rung Pura Sialkot	2.70	1969-1970
2	Construction of 50,000 Gallon Overhead Reservoir at Nankana Sahib	4.00	1972-1973
3	Providing & Laying 45" i/d Pressure Type Sewerage under 13" depth water	6.00	1974
4	Construction of 30,000 Gallon Overhead Reservoir at Railway Station of Kot Radha Kishan.	6.00	1976

Housing & Physical Department

S. No.	Project Name	Cost (Million)	Year
1	Construction of 50,000 Gallon Overhead Reservoir and sewerage scheme at low income Housing scheme no.2 Wasan Pura Lahore	8.00	1975-1976
2	Construction of 50,000 Gallon Over Head Reservoir and sewerage scheme in low income Housing scheme at Nankana Sahib	5.00	1976-1977
3	Sewerage scheme at Nankana Sahib	5.80	1977

Auqaf & Religious Affairs Department

S. No.	Project Name	Cost (Million)	Year
1	Construction of 50,000 Gallon Overhead Reservoir at Data Darbar, Lahore	1.70	1979
2	Construction of Medical ward and shops at Data Darbar Hospital	0.50	1982
3	Construction of 2 Nos. Quarters at Shah Kamal Colony	0.50	1985
4	Construction of Boundary Wall and Langar Khana at Shrine of Imam Ali-ul-Haq Sialkot	0.50	1985

S. No.	Project Name	Cost (Million)	Year
5	Construction of Maternity Outdoor Ward at Data Darbar Hospital	1.40	1984-1985
6	Construction of Operation Theater of Gynee Ward and General Ward at Data Darbar Hospital	1.40	1986-1987
7	Construction of Development Scheme Hzt. Baba Farid-ud-Din and 30,000 Galon over head Reservoir at Shrine Hzt. Baba Farid	8.00	1989-1990
8	Construction of Lawyer Chamber near High Court, Lahore	2.60	1989-1990
9	Construction of shops Zaireen complex	10.00	1990
10	Extension of Jamia Masjid Auqaf Colony Shah Kamal	1.30	1993
11	Construction of Zaireen complex at Bibi Pak Daman, Lahore	5.50	1995
12	Construction of Model Mosque at shrine of Hzt. Sakhi Saiden Shah Sherazi, Choa Saiden Shah Chakwal	7.20	1996
13	Construction of Model Mosque at shrine of Hazrat Baba Bulleh Shah, Kasur	15.70	2000
14	Construction of shops, offices and shrine of Sain Allah Rakha, Faisalabad	8.70	2001
15	Re-Construction of Hazrat Baba Bulleh Shah shrine, Kasur	14.30	2002
16	Construction of Flats at shopping center attached to Jamia Masjid Markazi Rawalpindi	17.65	2006
17	Construction of shopping Center at Waqf Allah Rakha Trust, Delhi Gate Lahore	11.06	2007
18	Construction of Madrassa Dar-ul-Uloom at Waqf Plot, Muslim Town Bahawalpur	11.78	2007
19	Construction of Madrassa and Mosque Anwar-e-Madina at Ferozpur Road Kahna Nau Lahore	27.69	2007
20	RCC Retaining wall at shrine of Hzt. Baba Farid, Pak Pattan	5.75	2007

S. No.	Project Name	Cost (Million)	Year
21	Construction of Development scheme at shrine of Hazrat Madhu Laal Hussain, Lahore	34.33	2010
22	P/L Sewer pipe line & Improvement of roads at Data Darbar Hospital, Lahore	41.7	2012
23	Re-Construction of Shrine Hazrat Madhu Laal Hussain, Lahore	10.66	2016
24	Construction of RCC Wall at shrine of Kamal Chishtian, Kasur	20.20	2015
25	Extension/up-gradation of the shrine of Hazrat khawaja Ghulam Fareed (R.A) Kot mithan, District Rajan Pur	73.00	2022-2023

University of Engineering & Technology - Lahore

S. No.	Project Name	Cost (Million)	Year
1	Construction of Mathematics Department	2.45	1995
2	Construction of Al-Zohra girls Hostel	5.00	2004
3	Construction of Geological Engineering Labs and Library in the Department of Mining & Geological Engineering	13.70	2002
4	Extension of Civil Engineering Department	11.90	2004

University of Engineering & Technology - Kala Shah Kaku Campus

S. No.	Project Name	Cost (Million)	Year
1	Construction of Mechanical Engineering Department	65.00	2006
2	Construction of Electrical Engineering Department	40.00	2006
3	Construction of Main Entrance Gate of UET KSK Campus	3.40	2007
4	Construction of 16000 Rft Boundary Wall of UET KSK Campus	10.00	2006

S. No.	Project Name	Cost (Million)	Year
5	Construction of Chemical Engineering Department	70.00	2007
6	Construction of 65000 Gallon Overhead Water Reservoir	13.50	2009
7	Construction of Mosque at Faisalabad Campus	34.60	2015

Anjuman Himayet-I-Islam

S. No.	Project Name	Cost (Million)	Year
1	Construction of D-Plaza at Multan Road, Lahore	73.20	2019-2020
2	Construction of Poly Technical College, Shahdara, Lahore	71.35	2019-2020
3	Construction of Charity Plaza at Multan Road, Lahore	210.00	2021-2023

Forest Department KPK

S. No.	Project Name	Cost (Million)	Year
1	Marking & Harvesting of Pine Trees (Approx. Volume 250,000 CFT)	180.00	2023-2024
2	Marking & Harvesting of Pine Trees and Kail Trees (Volume 60,000 CFT)	43.20	2023-2024

Daanish Schools and Centers of Excellence Authority

S. No.	Project Name	Cost (Million)	Year
1	Upgradation of Daanish School - Chishtian - Group 1-A (Boys Campus)	210.281	2016-19
2	Upgradation of Daanish School - Chishtian Group No. 1-B Auditorium	63.456	2016-19
3	Upgradation of Daanish School - Chishtian - Group No. 2 (Girls Campus)	210.984	2016-19

DESCOS & NTDC

S. No.	Project Name	Cost (Million)	Year
1	Lot-1 : Procurement of Plant, Design, Supply, Installation, Testing and Commissioning of Conversion Work from 66kV to 132kV on Turn Key basis at KOT SULTAN (Main Contractor: PEL & Subcontractor: CMA)	45.00	2019-2020
2	Procurement of Plant- Design, Manufacture, Supply, Installation, Testing & Commissioning of 500kV Double Circuit Quad Bundle Transmission Line from Suki Kinari Hydro Power Station to Interconnection Point of Existing Neelum Jhelum 500kV Double Circuit Quad Bundle Transmission Line (approx. 75km).	378.40	Since July 2021
3	Import of 100 MW Power from Polan (City of Iran) to Gwadar; GWADAR 220KV TWIN BUNDLE D/C T/LINE TURNKEY PROJECT CONTRACT AGREEMENT NO SU-NT/2009-101 (Main Contractor: SUNIR & Subcontractors: MKEC & CMA)	398.17	2023

LIST OF T & P

Laboratory Material

Sieve set (Crush)	60 sets
Sieve set (Sand)	60 sets
Weight machine (Digital)	35 nos.
Slump cone	20 nos.
Slump cone plate	20 nos.
Cylinder mould	50 nos.
Cylinder mould rod	10 nos.
Taghari for Lab	60 nos.
Hammer	29 nos.
Temperature gauge	21 nos.
Vernier caliper	23 nos.

Site Machinery

Excavator DOOSAN	01 no. (2009 model 2018 import)
Mixer Machine	18 nos.
Tractor Trolley	02 nos.
Roller Compactor	10 nos.
Plate Compactor	15 nos.
Lift Machine 100' Height	08 sets
Winch Machine 01 ton	02 nos.
Winch Machine 02 ton	01 no.
Winch Machine 05 ton	01 no.

Survey Instruments

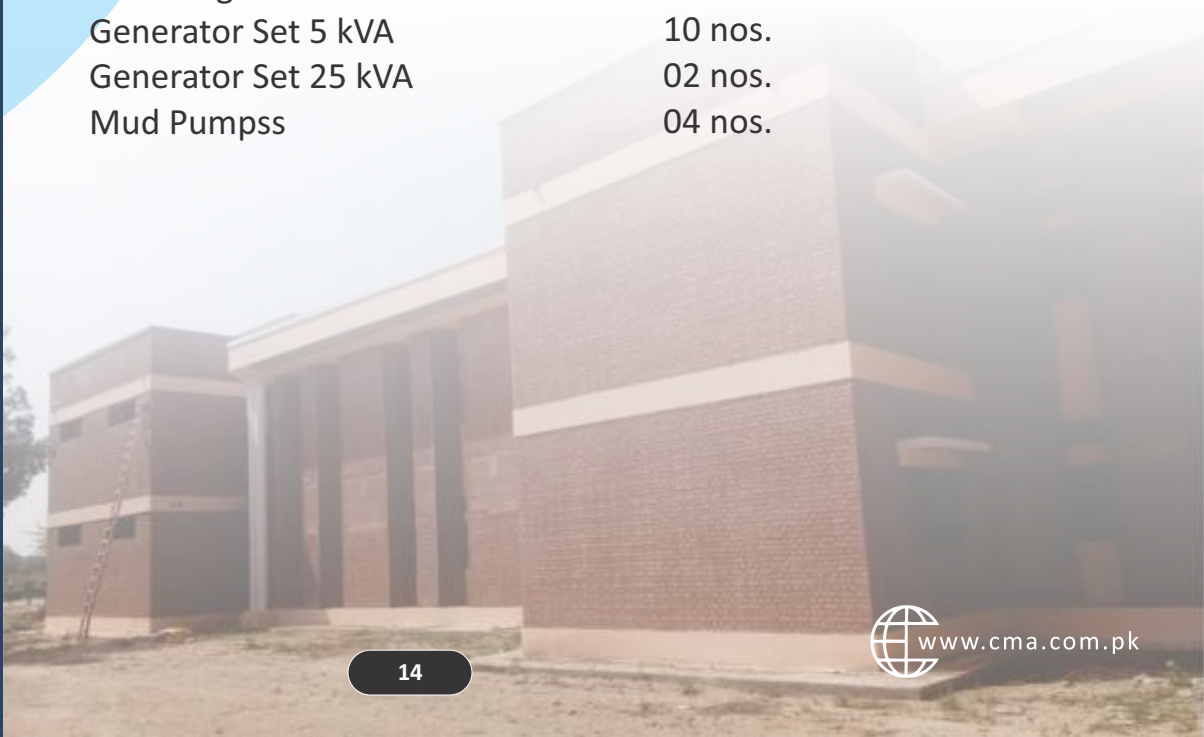
RTK (Hi-Target) V 90+Total Station	01 (Complete set)
Total Station	01 no.
Theodolite	05 nos.
Auto Level	30 nos.
Staff rods	50 nos.
Tripod stand	75 nos.
Steel tape (50M)	150 nos.

Site Vehicles

Toyota VIGO	02 nos.
Suzuki Jimny	04 nos.
Suzuki Pick UP	03 nos.
Valley Jeeps	08 nos.
Diana Mazda Titan 3500 4x4	03 nos.

T & P

Mechanical Vibrator	20 nos.
Welding Plant	06 nos.
Wheel Barrow	80 nos.
Shuttering Plates (different sizes)	5000 nos.
Folding Pipe (different lengths)	6000 nos.
Folding Joints	20000 nos.
Measuring Box	30 nos.
Water Drums	60 nos.
Water Pipe 0.75"	5000 ft
Garmala (wooden + steel)	150 nos.
Spade	100+ nos.
Kassi	100+ nos.
Ganti	100+ nos.
Panji	100+ nos.
Concrete Shoes	300 Pairs
Concrete Gloves	250 Pairs
Shamyana with bamboo	25 nos.
Tent with bamboo	30 nos.
Wooden Battens (2.5"x5"x6')	3000 nos.
Wooden Wedges	8000 nos.
Tool Kit Complete	08 Sets
Can	25 nos.
Wooden Stair	25 nos.
Grinder Machine	20 nos.
Water Pumps (Different Horsepower)	35 nos.
Peter Engine Sets	20 nos.
Generator Set 5 kVA	10 nos.
Generator Set 25 kVA	02 nos.
Mud Pumpss	04 nos.



Some of our **PROJECTS**



Some of our **PROJECTS**



HEALTH & SAFETY

We ensure the health and safety at work of all our people and any other people who may be affected by our work activities. We will comply with the requirements of health and safety legislation.

- Eliminate potential hazards by providing appropriate safeguards, personal protective equipment and safe work tasks.
- Provide necessary personal protective equipment and enforce its use and care. Provide effective safety and health training to all employees.
- Be familiar and comply with all applicable safety standards.
- Ensure that work-sites have designated competent person(s) with the authority to enforce the safety program and take corrective actions.



OUR PARTNERS



MKEC - MK Engineers & Constructors (PVT) Ltd.



NHC - National Heritage Constructors



Pyramid Consulting Engineers (Leading Design Firm)



OUR CLIENTS



*"We don't want to push our ideas on to customers,
we simply want to make what they want."*

Laura Ashley



CMA Engineering & Construction

55 Years of Experience



Head Office

65/2 FCC, Syed Maratib Ali Road, Gulberg-IV, Lahore, Pakistan.

☎ +92 42 35778186-87 ☎ +92 300 7111173

✉ info@cma.com.pk 🌐 www.cma.com.pk